

Photo 33 - Sample 34

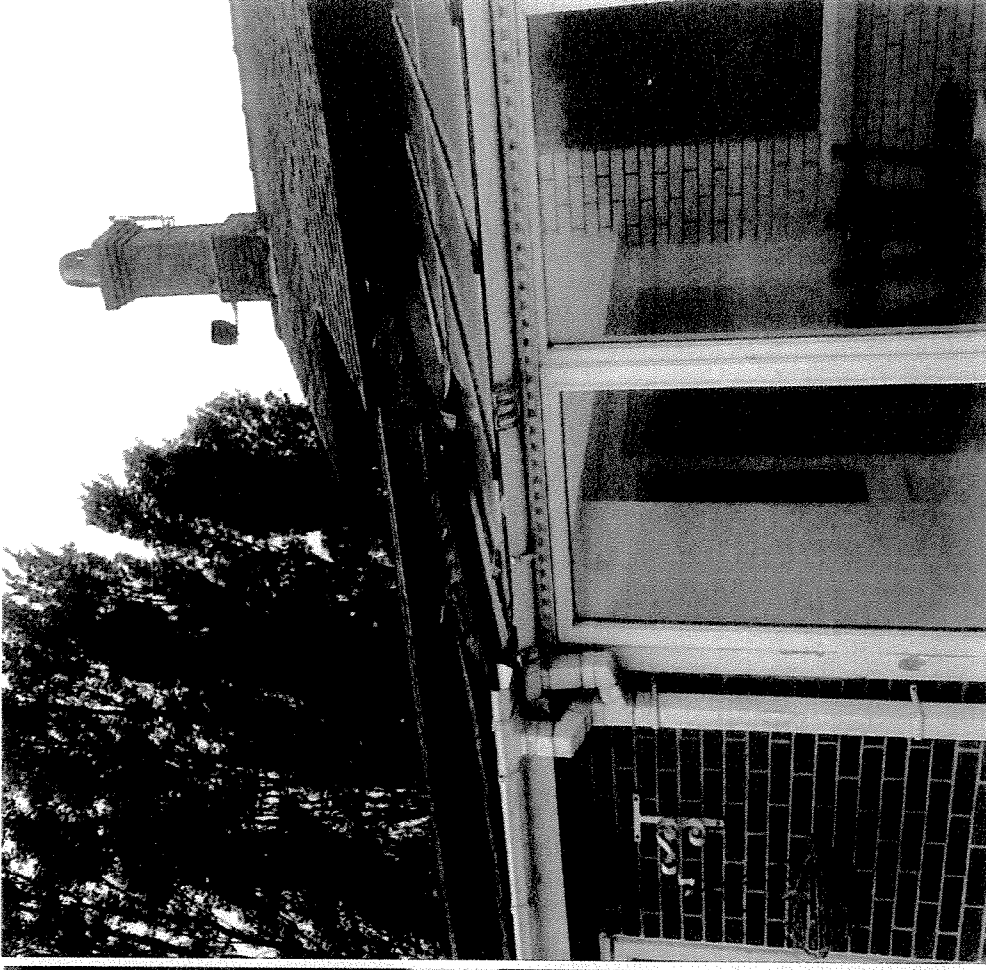
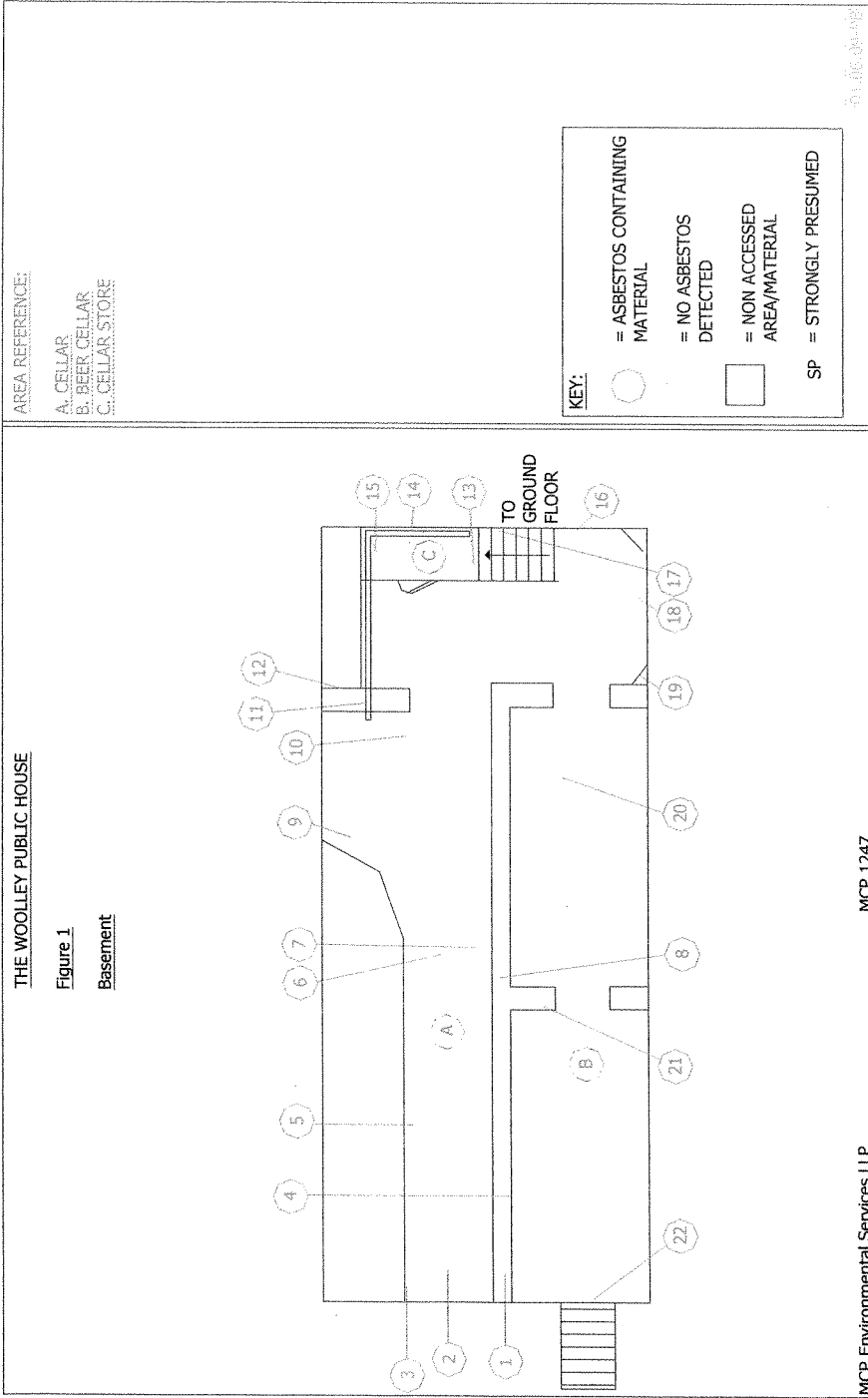


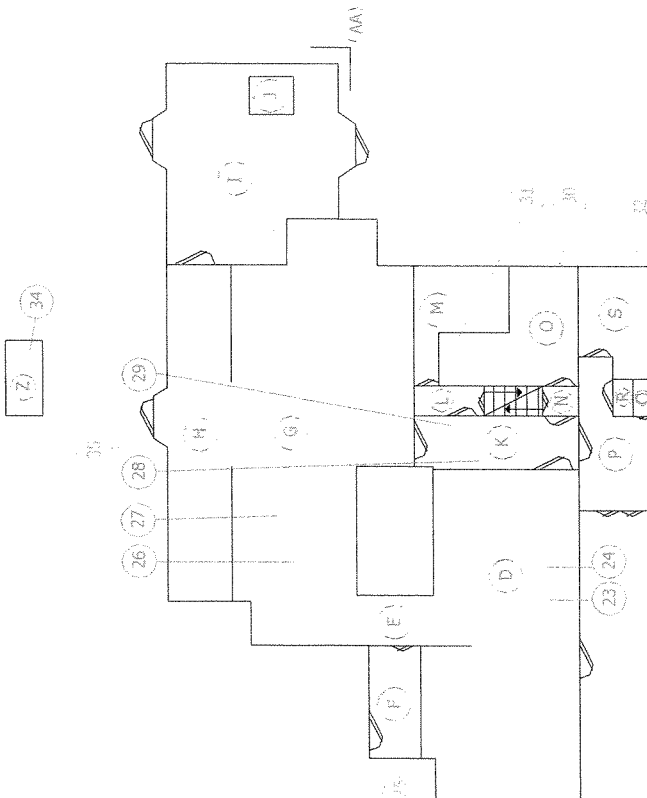
Photo 34 - Sample 35



THE WOOLLEY PUBLIC HOUSE

Figure 2

Ground Floor

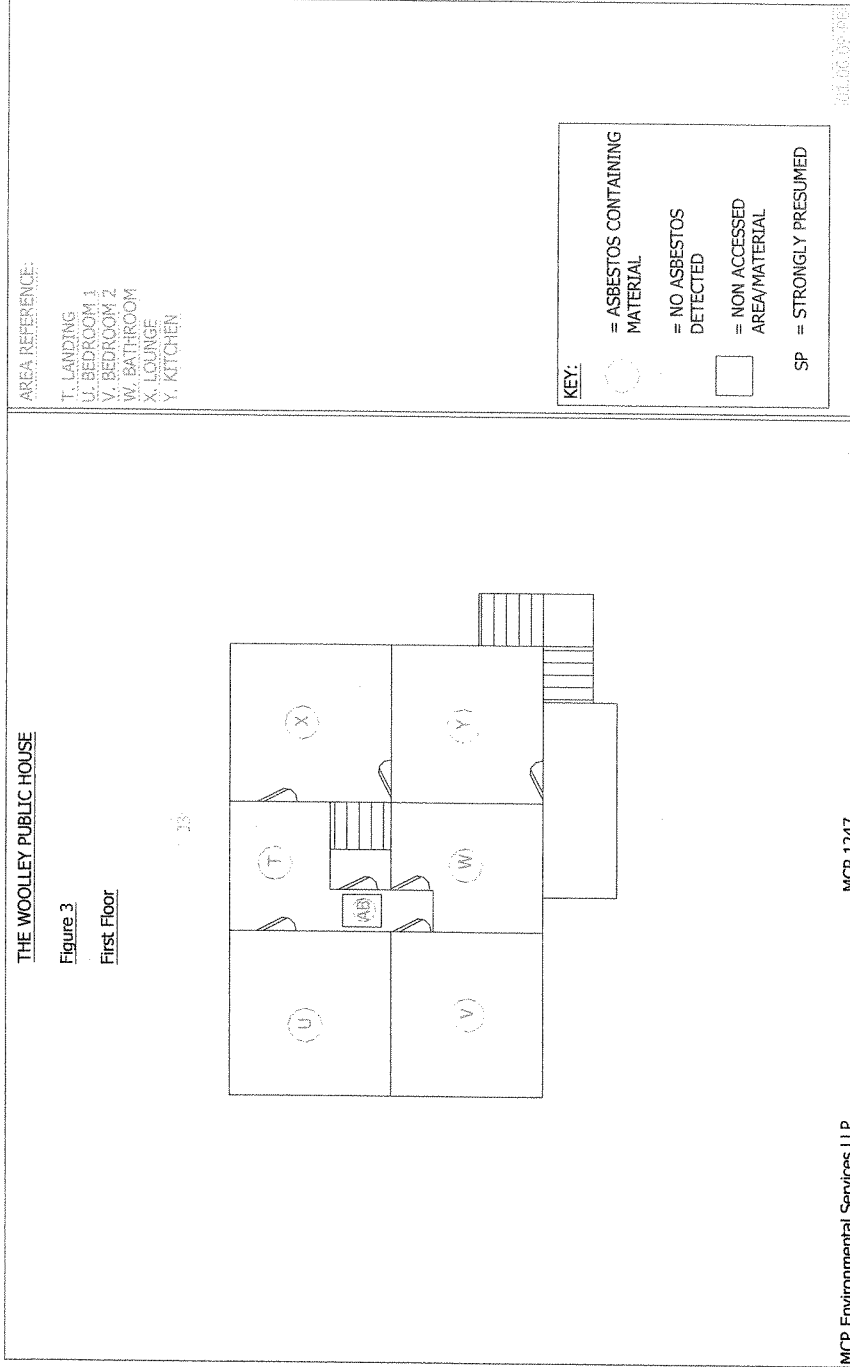


AREA REFERENCE:

- D. POOL BAR
- E. BAR
- F. POT WASH
- G. MAIN BAR
- H. CONSERVATORY
- I. FUNCTION ROOM
- J. ROOF SPACE
- K. CORRIDOR
- L. W/C LOBBY
- M. LADIES W/C
- N. KITCHEN LOBBY
- O. KITCHEN
- P. MAIN ENTRANCE
- Q. CUPBOARD
- R. STORE CUPBOARD
- S. MEN'S W/C

KEY:

- = ASBESTOS CONTAINING MATERIAL
- = NO ASBESTOS DETECTED
- = NON ACCESSED AREA/MATERIAL
- SP = STRONGLY PRESUMED



**Key:** **Approx Extent:**  
N/Q = Not Quantifiable

**Accessibility:**  
0 = Infrequently Visited/ Usually Inaccessible  
1 = Occasionally Visited / Accessed  
2 = Easily Visited / Accessed  
3 = Routinely Visited / Accessed  
N/A = Not Accessed/ Inaccessible

**Asbestos Type:**

3 = Crocidolite (Blue Asbestos)  
2 = Amosite (Brown Asbestos)  
1 = Chrysotile (White Asbestos)  
NAD = No Asbestos Detected

**Level of Identification:**

ID = Sample Taken and Analysed  
SP = Strongly Presumed to contain Asbestos  
P = Material Presumed to contain Asbestos  
Asbestos (see note 2)

**Recommendations:**

A = Urgent Removal  
B = Program Removal  
C = Environmental Clean  
D = Repair & Label  
E = Encapsulate & Label  
F = Enclose & Label  
G = Manage & Label  
H = Manage  
I = Other recommendation  
P = Presumed to contain

**NOTES:**

- All areas and materials excluded from this **Asbestos Survey** require further inspection and testing, as these may contain Asbestos.
- All **presumed Asbestos Containing Materials** were outside of the scope of the survey. These **presumed Asbestos Containing Materials** are given a P (Presumed to contain asbestos) recommendation, as they have not been sampled, therefore they are presumed to contain Asbestos. These materials require further inspection and testing when they become accessible or are safe to sample, until which time they should be presumed to contain Asbestos.
- **MCP Environmental Services LLP** did not carry out inspections and testing to all non-accessed areas and materials as they were outside of the scope of the survey.
- **MCP Environmental Services LLP** cannot accept liability for any **Asbestos Containing Materials**, which may be found in areas outside of the scope of the survey.
- The data contained within this report is intended to provide factual information only as to the presence of asbestos containing materials. Measurements or quantities described herein should not be relied upon for any contractual or pricing purpose.
- All **strongly presumed Asbestos Containing Materials** will be given the same recommendation as the associated **identified Asbestos Containing Material**.
- **MCP Environmental Services LLP** carried out a material assessment on the survey date. The material assessment scores given to **all identified and strongly presumed Asbestos Containing Materials** are based on: the judgement of the surveyor on the survey date along with the laboratory analytical result. If any change to the condition, accessibility or surface treatment of a **presumed, strongly presumed or identified Asbestos Containing Materials** is noted, re-assessment is required.
- The recommendations which **MCP Environmental Services LLP** has given to **all identified and strongly presumed Asbestos Containing Materials** is based on: the judgement of the surveyor on the survey date along with the laboratory analytical result and any documented instruction from the client. If any change to the condition, accessibility or surface treatment of a **presumed, strongly presumed or identified Asbestos Containing Materials** is noted, re-assessment is required.
- The accessibility of a product is **not** incorporated into the material assessment score.
- If any works are to be carried out, which may cause disturbance/damage to any **presumed, strongly presumed or identified Asbestos Containing Materials**, Re-assessment is required.
- The information contained within the **Area and Sample Summaries** should only be used in conjunction with all other information contained within an **MCP Environmental Services LLP** full survey report. In particular, the client should always refer to the survey limitations and caveats, prior to commencing any works.
- The risk assessment for **strongly presumed or identified Asbestos Containing Materials** can only be carried out with the detailed knowledge of: The Material Assessment Scores for the materials in question (provided by **MCP Environmental Services LLP**); The Disturbance Potential for the materials in question (provided by the client); Areas where future work or maintenance activity, may lead to contact with materials, which are known to contain asbestos (provided by the client); The occupant activity that is undertaken in the area concerned (provided by the client) and; The human exposure potential (provided by the client).
- Although the **MCP Environmental Services LLP** surveyor may have some of the information which will contribute to the risk assessment and may be part of an assessment team, the Client under **CAR 2006** is required to make the risk assessment, using the information given in the survey and their detailed knowledge of the activities carried out within the premises. The risk assessment will form the basis of the **Asbestos Management Plan**. Further information on risk assessments and management of asbestos is available in **HSE** guidance document (HSG 227). **MCP Environmental Services LLP** did not carry out a priority assessment on the survey date, unless the client requested us to do so.
- If the Client requires assistance in producing a priority assessment, **MCP Environmental Services LLP** can provide consultation as part of the assessment team.
- Any typing, clerical or other errors or omissions in any literature issued by **MCP Environmental Services LLP** shall be subject to correction without any liability on behalf of **MCP Environmental Services LLP**.



**Clough , Diane**

---

**From:** Pete Adams [Pete.Adams@mcp-environmental.co.uk]  
**Sent:** 10 June 2009 12:12  
**To:** Clough , Diane  
**Subject:** RE: asbestos removal from the Woolley Pub, Darton  
**Attachments:** MCP POW 21020 - Issue 3 Insulation.doc; Revised Drawing The Wooley (2).pdf; Revised Drawing The Wooley (1).pdf

Hi Diane,

no problem. Our lads will be on site from around 0800 until 1600 each day. After today the normal supervisor (David Jukes) will be back on site so please feel free to speak to him when you arrive.

As discussed, I have attached a copy of the revised POW & drawings for your records.

Kind regards,  
Pete

---

**From:** Clough , Diane [mailto:DianeClough@barnsley.gov.uk]  
**Sent:** 10 June 2009 09:09  
**To:** Pete Adams  
**Subject:** asbestos removal from the Woolley Pub, Darton

Hi Pete,  
Thank you for contacting me so that I can have a look at your asbestos removal process.  
If I can, I will take another drive out before the end of the week.  
Thanks again  
Diane

Diane Clough  
Regulatory Service Field Officer (H&S)  
Regulatory Services  
Barnsley MBC  
P O Box 602  
Barnsley  
S70 9FB  
Tel: 01226 775762  
Fax: 01226 775699

**Health and safety information and advice:**

Call 0845 345 0055 or visit:

<http://www.hse.gov.uk/contact>

**\*\*\* Barnsley MBC Disclaimer:**

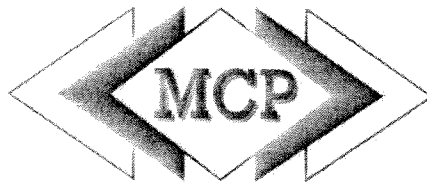
This e-mail and any files attached are confidential for the use of the intended recipient. If you have received this e-mail in error please notify the sender as soon as possible and delete the communication from your system without copying, disseminating or distributing the same in any way by any means.

Any views or opinions expressed belong solely to the author and do not necessarily represent those of the Council. In particular, the Council will not accept liability for any defamatory statements made by email communications. Recipients are responsible for ensuring that all e-mails and files sent are checked for viruses. The Council will not accept liability for damage caused by any virus transmitted by this e-mail. No guarantees are offered on the security, content and accuracy of any e-mails and files received. Be aware that this e-mail communication may be intercepted for regulatory, quality control, or crime detection purposes unless otherwise prohibited. The content of this email and any attachment may be stored for future reference.

27/08/2009







**ENVIRONMENTAL SERVICES**

**PROJECT NO: RC21020**

**MCP ENVIRONMENTAL SERVICES LLP**

**NOTIFICATION  
and  
PLAN OF WORK  
WITH  
ASBESTOS  
AT  
The Wooley  
Colliery Road  
Darton  
Barnsley  
for  
Goldcrest Leisure  
York**

**Associated Risk Assessment MCP-RA-21020**

<b>Contractor's Name</b>	MCP Environmental Services LLP	<b>Contractor's Telephone Number</b>	01274 601021	
<b>Contractor's Address</b>	Spartan Road South Bradford Trading Estate Low Moor Bradford BD12 0RY	<b>Contractor's Fax Number</b>	01274 608158	
		<b>Contractor's email address</b>	office@mcp-environmental.co.uk	
		<b>Document Title &amp; Revision No</b>	MCP-POW-21020 - Issue No: 3	
		<b>Date Drafted</b>	10 June 2009	
<b>A copy of the standard procedures relating to this plan of work has been deposited at:</b>		Barnsley Metropolitan District Council		
<b>Plan of Work Prepared By:</b>		Pete Adams Asbestos Manager		
<b>Project Notifiable to HSE</b>	Yes <input checked="" type="checkbox"/>	No <input type="checkbox"/>	<b>Date Project Notified to HSE</b>	Original 12/05/09

## ADDITIONAL INFORMATION (not already on ASB 5)

Project Start Date	08-06-09			
Project Finish Date	12-06-09			
Project Manager	Pete Adams			
Contact Telephone Number	07866 694164 / 01274601021			
Client Contact/Tel: Number				
Number of Employees	Max 8.			
Site Supervisor	David Jukes			
Contact Telephone Number	07514260764			
Asbestos Survey Details	MCP			
Type of Asbestos Containing Material (ACM)	Asbestos Insulation			
Asbestos Containing Material condition	Good condition			
Asbestos Containing Material fibre type	Chrysotile, Amosite & Crocidolite			
Location of Asbestos Containing Material	Cellar storeroom			
Quantities of Asbestos Containing Material	Approx. 100bags			
Volume of Enclosure	Approx. 3300 cuft			
Minimum Number of Air Changes	Minimum of 8			
Size of Negative Pressure Units ((H x B x L) divide by number of air changes i.e. 5)	1500 CFU			
Number of Negative Pressure Unit used per enclosure	Three			
Person or Company providing Four Stage Clearance	ADMAS Limited Storrs Hill Road Wyke			
Name or Person acting as CDM Coordinator	N/A			
Current version and date of current procedures	Issue No 3 8 <sup>th</sup> July 2008			
Emergency procedure details and references	As per section of this document.			
When will Asbestos Supervisor be on site	During all of the site activities.			
Who will authorise any departures from the Plan of Work	Pete Adams - MCP Asbestos Manager			
Other associated notifications	None			
Anticipated maximum exposure using controls specified.	<0.01f/cm <sup>3</sup>	Personal Monitoring to be carried out	Yes X	No

## Detailed Scope of the Work

Removal of Asbestos Insulation to pipe work and Insulation Debris in Cellar at The Woolley Public House, Collier Road, Darton, Barnsley on behalf of Goldcrest Leisure, York.

## Work Sequence

### Arrival on Site and Site Preparation

1. **MCP Person in Charge of Working Party** to report to **Client's and Site Representative** get instructions and information then carry out with other **MCP Operatives** a Tool Box Talk explaining Risk Assessments, Method Statements, Site Rules, relevant information from the **Site Representative** plus any other relevant topics.
2. **MCP Person in Charge of Working Party** to be confirmed with the **Site Representative** that it is safe to enter onto the property that no other work is on going which could affect the Asbestos Containing Material removal or any hazards in or on the property, which could affect the work, i.e. other work, traffic movement.
3. **MCP Operatives** to proceed to area and position vehicle and set up equipment ready to commence removal of Asbestos Containing Materials.
4. **MCP Operatives** will cordon off with physical barriers and “ **Asbestos Removal Operations, Authorised Access Only**” warning signs posted around the perimeter of the work area.

### **Note**

The area within the barrier will be designated “**Respirator Zone**” Operatives working within the “**Respirator Zone**” will be issued with and wear the following **P.P.E.**

- Disposable hooded overalls with elasticated cuffs and ankles. (Red = Enclosure & White = Transit)
- Disposable overshoes.
- Gloves.
- Respiratory Protective Equipment complying with HSG 53 “Respiratory Protective Equipment at Work a Practical Guide”.

Full Face Mask to standard EN 136 and Half Face Masks to standard EN 140 both with P3 (high efficiency) particle filter to standard EN 143.

## **Method of Work for the Removal of Asbestos Insulation**

5. **MCP Operatives** to set up Decontamination Unit at the front of the property adjacent to the front entrance. (see attached plan). The decontamination unit will have a water supply via hosepipe from the kitchen area
6. A petrol generator will be used to provide power for the decontamination unit.
7. A 3 Stage Airlock will be constructed either using a timber or metal framework and 1000 gauge visqueen. The Airlock will be placed in the corridor, adjacent to the female toilet/cellar entrance (see attached sketch). The airlock will be secured using 3" cloth tape, spray tack adhesive and staples. No bag lock is to be used on this site as there is restricted space on site.
8. Two **4000 NPU's** will be placed inside the enclosure with roving heads to ensure adequate negative pressure is achieved. The **NPU's** will vent outside through the barrel drop hatch and a vent.
9. If there is no power available, petrol generators will be utilised to power the NPU's, H-Type Vacs and any other electrical equipment needed to carry out the works.
10. The floor of the working enclosure will be pre-cleaned and then covered with 1000 gauge polythene where required to enable the clean up process to be carried out effectively.
11. Any duct work will be sealed with expandable foam to ensure an airtight enclosure is constructed.
12. When the working enclosure is set up, a Smoke test will be carried out by **MCP Operatives** and witnessed to ensure adequate negative pressure is achieved, the enclosure is sealed correctly and that the NPU's are functioning correctly.
13. All contaminated furniture, boxes etc found within the cellar will be removed, disposed of as asbestos waste and placed in the lockable skip.
14. MCP Operatives will encapsulate the Asbestos containing insulation on the pipes with 1000 gauge visqueen and secure with 3" cloth tape. This enables the redundant pipes to be cut and removed in whole sections. It will also prevent the spread of any asbestos materials.
15. Using hand tools, **MCP Operatives** will carefully cut the pipes at asbestos free sections: An Asbestos suppressant will be used to prevent fibre release and constant shadow vacuuming using 'H Type' vacuum will be carried out.
16. The pipework and brackets that remain in situ will also be cleaned using hand tools to ensure debris materials are thoroughly removed.

17. A full environmental clean will be undertaken using hand tools to all surfaces in the cellar to ensure asbestos debris materials are removed. All walls, floor and ledges will be wire brushed and scraped to remove the asbestos insulation overspray.
18. Pipe hangers and fixings will be removed to ensure no debris materials can remain between them and the wall
19. All areas will be cleaned using cloths and surfactant to ensure where reasonably practicable all surfaces are dust free and any insulation residue is removed.
20. **MCP Operators** will treat all Asbestos materials as '**Asbestos Contaminated Waste**' which will be double bagged, both bags being sealed at the neck with adhesive tape (the first bag being red in colour, the second bag being clear) then labelled "**Asbestos Containing Material Waste**" and placed in the lockable skip to the side of the building.

### Control Measures

- Exposure levels are not expected to exceed **<0.1 f/cm<sup>3</sup>**
  - Surfactant will be utilized throughout the removal process to reduce fibre exposure
  - A sketch of the work area and enclosures is attached. This also indicates the positions of the Negative pressure units, the Decontamination Unit and transit routes.
  - The total volume of the enclosure is approximately **3300 cuft**. Three x **1500 NPU** will be sufficient for the air changes required.
  - Operatives will wear full positive pressure respiratory equipment at all times during the works.
  - The allocated supervisor will attend site for the duration of the works.
  - The work will commence on **8<sup>th</sup> June 2009** during normal working hours.
21. Personal monitoring will be carried out by ADMAS during one visit on the third day of the project.
  22. Once all asbestos removal work is completed and the area including the enclosure has been vacuumed and cleaned the **UKAS** registered analyst will conduct the 4-Stage Clearance Test via visual checks and air sampling. If satisfied they will issue a certificate and allow the enclosure to be dismantled, if not they will instruct further cleaning until their tests prove satisfactory.
  23. Once given clearance the enclosure will be carefully dismantled. If further contamination is found further cleaning and re testing will be necessary. On receipt of clearance certificate, the enclosure will be dismantled and disposed of as asbestos waste. Waste will be double bagged both bags being sealed at the neck with adhesive tape (the first bag being red in colour, the second bag

being clear) then labelled “**Asbestos Containing Material Waste**” and placed in the lockable skip.

24. The Analyst will carry out the final inspection of the work area prior to handing back the site to the client.
25. The **MCP Operators** will treat the plastic sheet used for the enclosure as **Asbestos Contaminated Waste** and double bagged, both bags being sealed at the neck with adhesive tape (the first bag being red in colour, the second bag being clear) then labelled “**Asbestos Containing Material Waste**” and placed in the lockable skip on site

### **Site Inspection, Clean Up and Clear Up**

26. Once all Asbestos Containing Material removal and storage is complete the **MCP Operatives** will check the areas immediately adjacent to the designated work area for dust or debris and if necessary carry out a cleaning operation using the “**Type H**” vacuum cleaner and anti static cloths (tac-rags).
27. Once all work is completed all materials and disposable **PPE** will also be treated as Asbestos Contaminated Waste and double bagged, both bags being sealed at the neck with adhesive tape (the first bag being red in colour, the second bag being clear) then labelled “**Asbestos Containing Material Waste**” and placed in the lockable skip on site.
28. Once finished the asbestos waste will be removed from site by **MCP Licensed Transit Vehicle** to a **Licensed Disposal Site**. Copies of the Hazardous Waste Consignment Notes will be kept on record in the **MCP Waste Disposal File** and made available for inspection.

### **General Note**

This work has been assessed by the **MCP Asbestos Manager** as notifiable to the **HSE** and will require additional analytical work to permit re-occupation. If the work or circumstances change then this plan of work and associated risk assessment will need reviewing before work is permitted to progress.

### **Warning**

In the event of any significant changes being made to this ‘**Plan of Work**’ then the **MCP Supervisor** must report to the **MCP Asbestos Manager** and all work must stop until further notice.

## **Emergency procedures (including asbestos disturbance during enclosure erection, etc.).**

Site and building induction to be carried out by Site Asbestos Supervisor this to include:-

Information relating to:-

- Hazards and Risks identified in the Risk Assessment.
- Hazards and Risks identified by others.
- Preventive and Protective measures to minimise the risks identified.
- Content of the Plan of Work.
- Reporting requirements.
- First Aid Box and Fire Extinguishers location on site.
- Action in the event of a Fire or Emergency.
- Nature of Fire Alarms or systems.
- Escape Route.
- Who the Appointed Person is.
- How to summons the Emergency Services.
- Information contained with a CDM Construction Phase Health and Safety Plan.
- Accident Incident reporting arrangements.

Employees will familiarise themselves with the location and how to escape the enclosure, hygiene facility and building in an emergency.

Minor injury.

The injured party will be assisted through decontamination process and treated on site.

Disabling injury.

Assessment will be made as to whether the injured party can be moved. If the injured party can be moved his clothing will be vacuumed and removed within the airlock prior to be taken out to ambulance.

Severe injury.

Decontaminate injured party, in line with the type of injury. Remove from the working area for hospitalisation.

Injuries where the person cannot be moved vacuum and remove protective clothing, RPE to remain (injury permitting), cover them with clean polythene and affix sign "Asbestos Worker Decontaminated". RPE and protective clothing made available for emergency service personnel to enter enclosure.

Fire.

Small outbreaks to be dealt with using portable fire extinguishers.

For greater conflagration decontaminate through normal procedure if time permits, raise the alarm and evacuate the area. Should time not permit normal

decontamination, move to a safe area and decontaminate using vacuums and footbath.

First Aid.

A general first aid kit will be available within the company vehicle.

Arrangement for Contacting Emergency Services.

For each project an "Appointed Person" will be nominated.

The "Appointed Person" will be responsible for taking charge of the emergency situation and either carrying out or delegating other tasks to get help or address the situation.



## Variations to Standard Procedures

Standard Procedure, Reference	Document Title	Details of Variations from Standard Procedure in Respect of this Project
MCP Procedure 007	Working with Asbestos	None identified
MCP Policy 001	Health & Safety Policy Statement	None identified
MCP Flowchart 001	Asbestos Management Work	None identified
MCP Manual 002	Health, Safety, Environmental Organisation & Arrangements	None identified
MCP Procedure 013	Waste Transfer Station Working Plan.	None identified

## Equipment Schedule

Equipment Type	Details and Quantities
Negative Pressure Unit	4000 CFM x 2
Decontamination Unit	Transportable x 1
Vacuum Cleaner	Type H x 4
Transformer	240/110 volt centre tapped transformer x 2
Miscellaneous	Hand Tools
Suppresant	Hand pumped spray x 2
Petrol Generator	If required
Skip	Lockable x 1

## **Insert Sketch of Asbestos Removal Project at**

---

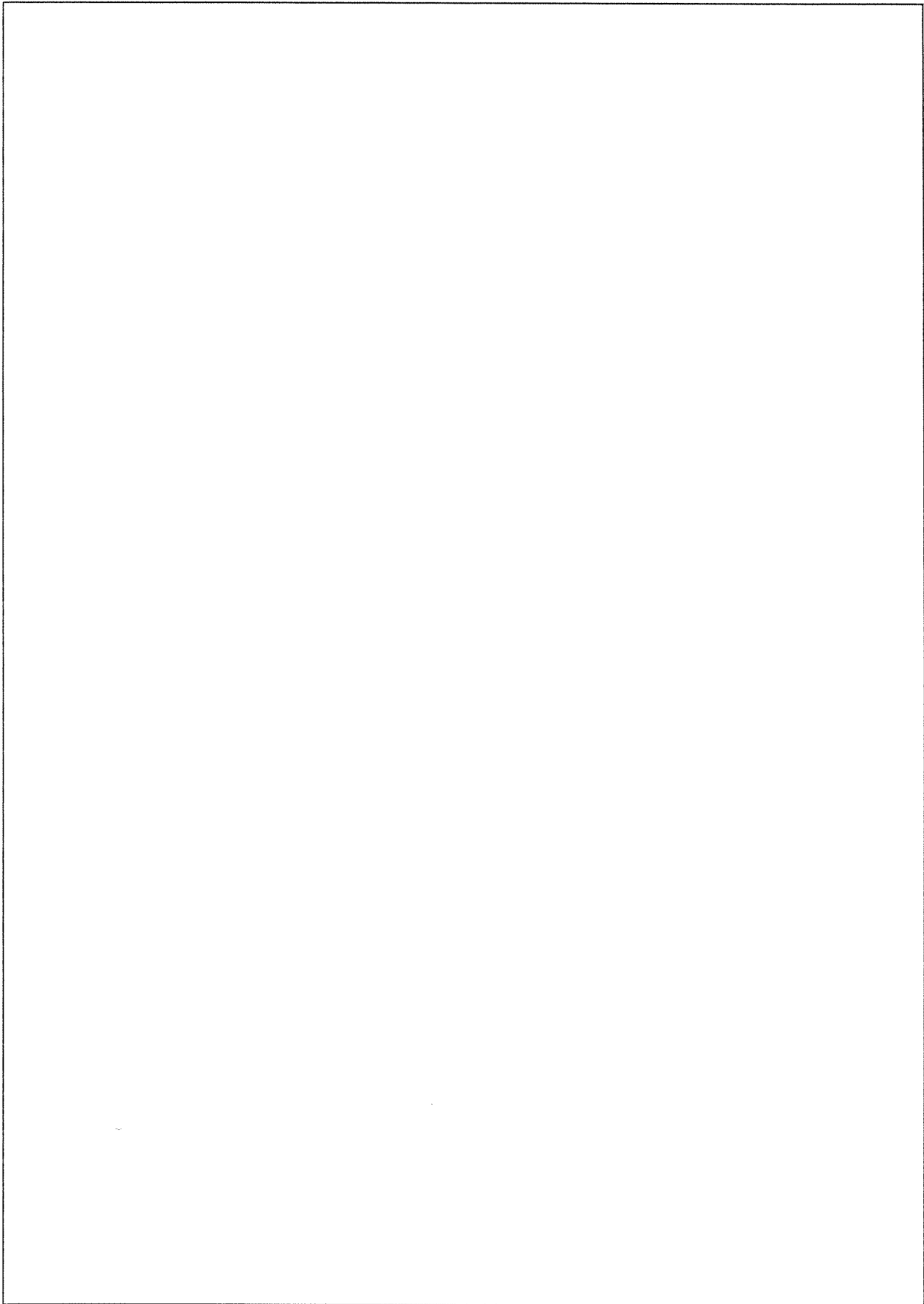
Sketch to include the following:-

- Size of enclosure.
- Location of viewing panel(s).
- Calculations for Size of Negative Pressure Units.  
(Height x Breadth x Length divided by Number of Air Changes i.e. 5).
- Position of Negative Pressure Units.
- Location of H Type vacuum cleaners.
- Position of Decontamination Unit(s).
- Transit Route.
- Air locks.
- Bag locks.
- Waste routes.
- Position of skips
- Electricity supplies.
- Water Supplies.

**If it is not practicable to draw or include a sketch of Asbestos Removal Project Site then state below the reasons why not.**



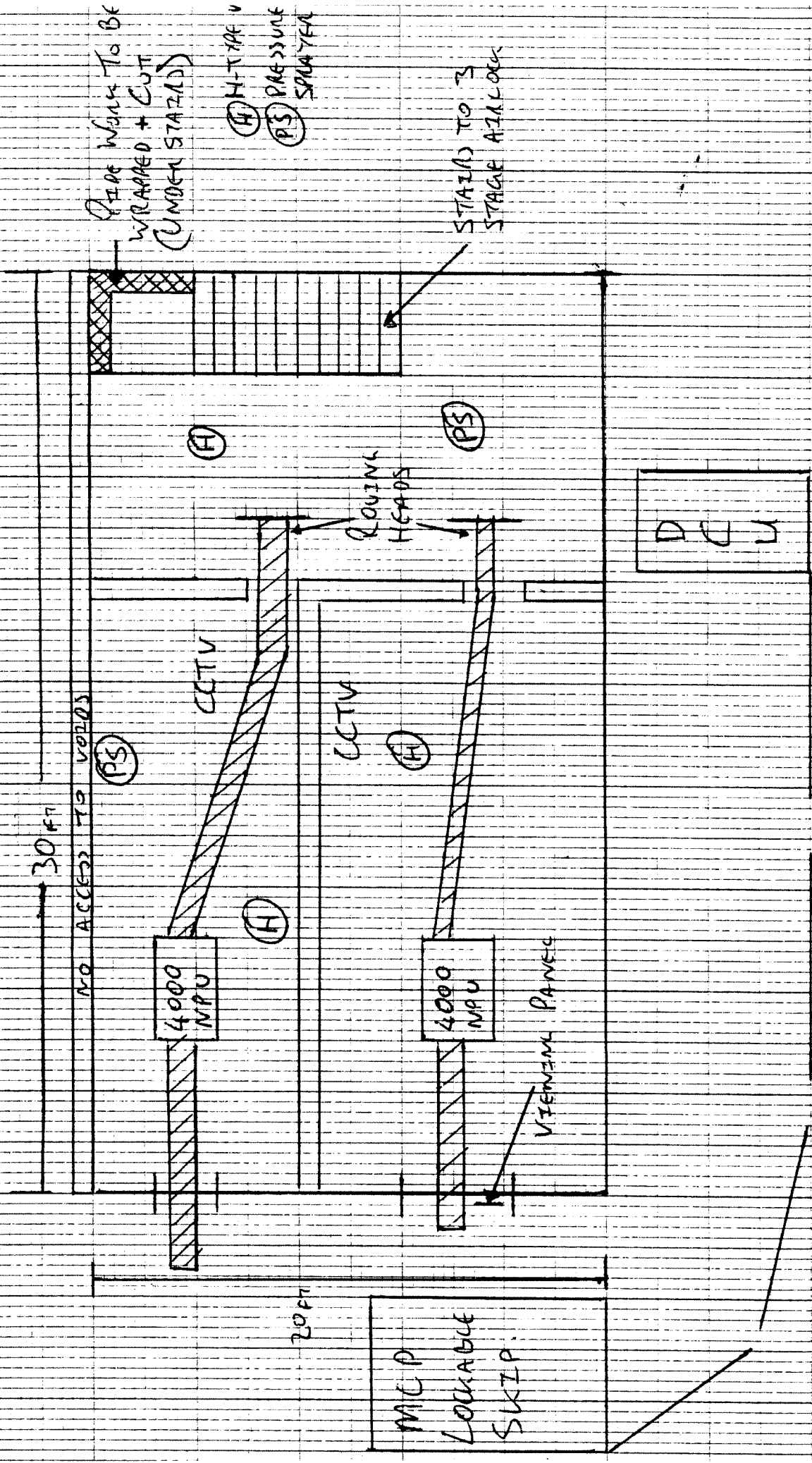
## Revised Site Drawing



## Revisions to Submitted Plan of Work

Date	Revision Number	Revision Details	Person Responsible for Revision	Signature
18-10-04	1	Original Document	Fred Maddick	<i>F. Maddick</i>
07-01-05	2	Addition of pages for recording site changes to Plan of Work and Site Drawing	Fred Maddick	<i>F. Maddick</i>
25-07-08	3	Created as updated Model Plan of Work based on Control of Asbestos Regulations 2006	Fred Maddick	<i>F. Maddick</i>

BASEMENT PLAN  
THE WOOLLEY PUBLIC HOUSE DARTON



PIPE WORK TO BE WRAPPED + CUT (UNDER STAIRS)  
 (H) H-TAPE U  
 (PS) PRESSURE SPRAYED

STAIRS TO 3 STAGE AIRLOCK

30 FT  
 NO ACCESS TO WOODS

4000 MPU

(H)

CCTV

CCTV

(H)

ROUTING HEADS

4000 MPU

(PS)

VIEWING PANELS

DCU

20 FT

MCP LOCKABLE SKIP

FENCED OFF AREA - NO ACCESS TO UNAUTHORISED PERSONNEL





21020

Ground Floor Plan  
The Woolley Public House, DARTON

Viewing Panels

BUCKET + SPONGES

H-Type Vac

STAIRS TO  
BASEMENT

BAR AREA

CCTV  
VIEWING  
AREA

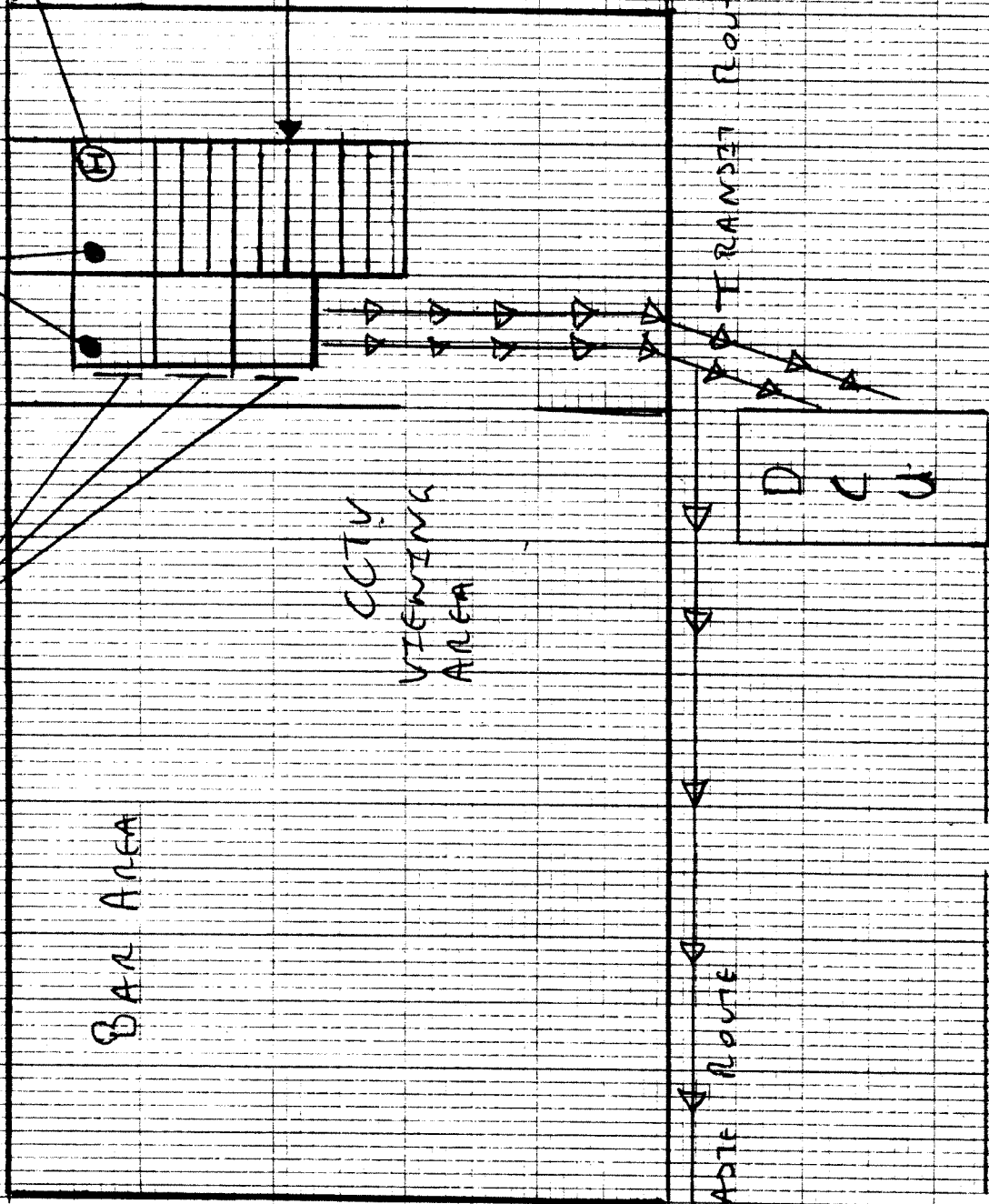
WASTE ROUTE

TRASHET ROUTE

MCP  
LOANABLE  
SKIP

D  
C  
J

FENCED OFF AREA - NO UNAUTHORIZED PERSONNEL





**Clough , Diane**

---

**From:** Pete Adams [Pete.Adams@mcp-environmental.co.uk]  
**Sent:** 11 June 2009 05:59  
**To:** Clough , Diane  
**Subject:** The Wolley Pub, Darton  
**Attachments:** The Wooley Darton audit 9 6 09.doc

Hi Diane,

please find attached the site audit report carried out by an external auditor on the above site as discussed.

The action points that he has raised in the summary section have been actioned and are included in the revised POW & drawings etc that I sent over to you yesterday.

Kind regards,  
Pete Adams



**Broadway Safety Ltd**  
**Robert Ibberson CMIOASH - Director**  
 4 Broadway Close Swinton, Mexborough, South Yorkshire, S64 8HG  
 Telephone: 01709 876674 - Mobile: 07884 222227  
 e-mail: [robertibberson@hotmail.com](mailto:robertibberson@hotmail.com)

**MCP Environmental Services**  
**Asbestos Safety Audit**

<b>SITE</b>	The Wooley, Colliery Road, Darton, Barnsley	
<b>AUDITOR &amp; DATE</b>	Auditor R Ibberson	9 June 09
<b>CONTRACT</b>	Goldcrest Leisure York	
<b>PERSONS SEEN</b>	Joint visit with Dean Cransfield. Seen Dave Jukes T Cueley G Crotty and S Brown.	
What type of asbestos containing material is being worked upon	Public house beer cellar. Environmental cleaning and the removal of a length of lagged pipe by wrap and cut.	

	Y	N	
<b>PRELIMINARIES</b>			
Contract Supervisor	X		David Jukes
Is supervisor on site that listed in the plan of work	X		4 on site 8 ASB5
Is the number of operatives on site less than or equal to that stated on the ASB5	X		But appears to be no mention of the wrap and cut work
Is the scope of works adequately described in the plan of work	X		
<b>SITE DOCUMENTATION</b>	Y	N	<b>COMMENTS</b>
Is there a copy of the contractor's current valid licence available for inspection?	X		
Is there a job specific plan of work/assessment on site and a copy of the company's standard procedures?	X		
Is there a copy of the ASB5 specific to the job on site and available for inspection	X		Dated 3/6/09 Start date. 8/6 See Summary
Is there a set of risk assessments on site and available for inspection for activities other than asbestos removal? (hot work, work at heights, use of hand tools, confined space etc)	X		
Is there a set of COSHH assessments on site? (Spraytack, PU Foam, Surfactant etc)	X		
Is the contractor's site diary/log available for inspection and up to date?	X		
Is there a copy of the contractor's employers liability insurance certificate/schedule available for inspection?	X		
<b>SITE OPERATIVES</b>	Y	N	All in order
Current medical certificates	X		
Training record	X		

Face fit test		X		
Operative clean shaven		X		
RPE examination record (monthly)		X		Reminded Dave to ensure
Emergency procedure awareness		X		
<b>SITE ORGANISATION</b>		Y	N	
Does the sketch plan included with plan of work match the site set up		X		Redrawn on site. See Summary
If work at height is necessary has safe access been provided				N/A
Can you see as much of the work area through the vision panel as practically possible		X		CCTV and vps
Are there adequate warning signs which comply with the Safety Signs Regulations (including black hand symbol)		X		
Is there a suitably stocked First Aid kit available on site		X		
<b>PLANT ON SITE/CERTIFICATION</b>		Y	N	<b>COMMENTS</b>
Are there at least 2 H type vacuums on site		X		4
Are copies of the DOP test certificates available and relevant to each vacuum on site		X		
Does the number and capacity of the NPUs in use correspond with that stated in the plan of work		X		Amended to 2 x 4000
Are copies of the DOP test certificates available and relevant to each NPU on site		X		
Is there a copy of the DOP test certificate available on site for the NPU within the dirty end of the DCU		X		Old certificate needs to be removed from clean end
<b>ENCLOSURE/AIRLOCKS</b>		Y	N	<b>COMMENTS</b>

Is the enclosure in sound condition to prevent the spread of asbestos	X		
Are the enclosure inspection and smoke test records available for inspection	X		Witnessed by Landlord
Is the enclosure adequately lit	X		Not very well in the air lock
Are the airlocks free from visible asbestos debris	X		
Is a bucket and sponge or similar available for decontamination of respirator	X		
Is the airlock opening oval or rectangular in shape	X		
Do the flaps cover the airlock openings adequately and are they sufficiently weighted	X		Inner flap ought to have been wider. Discussed on site with Dave
<b>AIR EXTRACTION EQUIPMENT</b>	<b>Y</b>	<b>N</b>	<b>COMMENTS</b>
Is the extract sited in relation to ideal air management	X		Roving heads in use
Is the extract capable of giving a minimum of 6-8 air changes	X		2 x 4000 NPUs turned down Good pull on flaps
Is the extract vented to outside atmosphere where practical	X		
<b>DUST SUPPRESSION</b>	<b>Y</b>	<b>N</b>	<b>COMMENTS</b>
Is the dust suppression method as indicated in the plan of work	X		Kill spray
Is the dust suppression method suitable for the type of work or material (if needle injection machine being used please state manufacturer)	X		
<b>AIR MONITORING</b>	<b>Y</b>	<b>N</b>	<b>COMMENTS</b>
Is air monitoring being carried out by a UKAS accredited organisation	X		ADMAS. See Summary
Are leakage tests carried out outside the enclosure		X	
Are personal samples taken during work		X	
Are air samples taken in the transit route		X	



<b>PPE</b>	<b>Y</b>	<b>N</b>	<b>COMMENTS</b>
RPE and filter used as stated in Plan of Work (ie suitable)	X		
RPE identifiable as a complete kit (ie mask, blower and battery all uniquely identified as one kit)	X		
Are disposable working coveralls of the standard specified in the plan of work (ie type 5)	X		
Colours of overalls as stated in the plan of work	X		
Is any other necessary PPE required provided eg goggles, hard hats and is it being worn		X	
<b>HYGIENE FACILITY</b>	<b>Y</b>	<b>N</b>	<b>COMMENTS</b>
Does the unit comply with EH47/L28 para 197	X		No 2
Unit connected/unconnected to work area as plan of work states	X		Generator in use. Advised re use of earth rod when practical
Transit route as short as possible and away from occupied areas	X		
Unit connected/working order (water, electrics, water filter, drains)	X		
Adequate number of showerheads for operatives ie at least one shower head for every 4 operatives	X		
Nailbrush provided in shower area	X		
Unit clean so far as is reasonable practicable	X		
Clearance test for unit conducted in dirty end and shower compartment of the unit	X		Dated 29/5/09. Gas tested 30/10/08
Are clean end and dirty end doors marked	X		
Are towels provided	X		
<b>WASTE</b>	<b>Y</b>	<b>N</b>	<b>COMMENTS</b>
Are the waste disposal arrangements as described in the plan of works		X	States transfer of up to 100 bags. See Summary

Waste transfer route free from split waste	X		
Has a bag lock been provided/not provided as detailed in plan of works		X	See Summary
<b>CLEARANCE</b>	Y	N	<b>COMMENTS</b>
Is there provision for the 4 stage site clearance certification prior to re-occupation	X		
Is there provision for final clearance testing inside the dirty end and the shower area of the hygiene facility	X		
Is there are separate clearance certificate issued	X		
<b>SCAFFOLDING</b>	Y	N	<b>COMMENTS</b>
Has the asbestos removal contractor any scaffolding on site			N/A
Was a subcontractor used to erect the scaffolding			
Does the scaffold form part of the enclosure or was it liable to disturb asbestos when erected			
<b>ACTIONS/OBSERVATIONS</b>	<p>Environmental cleaning of a typical pub beer cellar with a short length of lagged pipework to remove by wrap and cut. Job planned 8 – 12 June. Generally good standards on site.</p> <p>On returning to the office had a discussion with Pete Adams re the content of Plans etc. Emphasised the need for these to be comprehensive, accurate and site specific. (Plan for this job <u>not</u> drawn up by Pete as I understand it).</p>		
<p>Taking this site as an example particularly mentioned,</p> <ol style="list-style-type: none"> <li>1. There were 2 copies of the ASB5 on site both of which were dated 3 June. If that was the date submitted to the EHO then clearly 14 days not allowed. Discussed and assured that 14 day lead in period given. Need to check.</li> <li>2. The site supervisor can only make limited alterations to the Plan and on this site they had exceeded these limits.</li> </ol>			

Where detailed amendments are required the Plan should be returned to the office and the amendments agreed with the management. Examples included, a. the original sketch showed a direct connection of the DCU via the barrel hatch and cubes to the skip in effect a bag lock. These had been amended to an air lock only at the far end of the enclosure where no bag lock was practical, b. the Plan specified transfer of waste when a skip was on site ( up to 100 bags), c. the maximum likely exposure was stated as 0.01 fcm<sup>3</sup> ie the clearance level which in my view is unrealistically low, d. the volume of the enclosure was stated as 3300ft<sup>3</sup> needing 440cfm for 8 changes – my calculation 4200 needing 560cfm. ( Small point but as a general rule I would recommend a calculation for 12 air changes ie volume of enclosure over 5). Also, where roving heads are in use need to allow about 120cfm for each 20ft length.

The open barrel hatch had, in effect, been protected on 2 sides. Advised that the 3<sup>rd</sup> side need to be better protected against falls. (Matters such as this ought to be mentioned in the Plan and thereby demonstrating that the risk had been considered).

I would recommend as discussed, a box section in the Plan format which can be ticked to specify the analysis required on any given site ie 4 stage clearance, personals, backgrounds and re assurance.

**R Ibberson**  
**10/6/09**



## Butler , Stephen

---

**From:** Hardy , Michael on behalf of Health and Safety  
**Sent:** 19 June 2009 12:37  
**To:** Chambers , Johanna  
**Cc:** Clough , Diane  
**Subject:** RE: nrgent

Hello Joh

I was literally just setting off to an appointment, and I don't want to be late.....

Hello Diane

If you get chance can you ring him, if you can't or if he is not happy, please let me know and I will ring him later,

Thanks

Mick

---

**From:** Chambers , Johanna  
**Sent:** 19 June 2009 12:31  
**To:** Health and Safety  
**Subject:** nrgent

Hi, can you please ring Steve Snolson of Goldcross Leisure – if possible today or as soon as possible  
re: the Woolley pub at Darton on 07854292581

Stephen Butler has been dealing with it & he says that he never got back to him, not a happy chappy

Thanks

Joh

*Johanna Chambers  
Barnsley Metropolitan Borough Council  
Regulatory Services  
Westgate Plaza One  
Barnsley  
S70 9FB  
Tel: 01226 772468*





# **BARNLSLEY**

**Metropolitan Borough Council**

## **Regulatory Services**

Assistant Director: Ken Eastwood, BSc (Hons), MCIEH  
PO Box 602 BARNLSLEY S70 9FB

My Ref: RS/SRB/Woolley  
20090729

Your Ref:

Date: 26 August 2009

Enquiries To: Mr Stephen Butler  
regulatoryservices@barnsley.gov.uk

Telephone: (01226) 773863 Fax: (01226) 775699

Dear Mr McGee and Mr France

### **HEALTH AND SAFETY AT WORK ETC ACT 1974**

### **OUTSTANDING IMPROVEMENT NOTICES IN06, IN07, IN08, IN09, IN10 AND IN11**

### **THE WOOLLEY PUBLIC HOUSE, WOOLLEY COLLIERY ROAD, DARTON, BARNLSLEY S75 5JE**

With reference to the three improvement notices dated 11<sup>th</sup> December 2008 and served on each of you, I am writing to inform you that I have not received any written information to demonstrate that these notices have been complied with. I have spoken a number of times on the telephone with Mr Steven Nolson who informed me that the premises are open for business, but to date I have not received any reports detailing how you consider that you have complied with the notices.

Please supply me with relevant supporting documentation specified in the schedules to the improvement notices to demonstrate how the compliance has been fully achieved. You must refer to the original notices for full details but for your information the information required can be summarised as:

- The periodic electrical inspection report and evidence that any required works have been carried out.
- Your asbestos management plan for The Woolley
- Evidence that the flooring has been repaired or replaced and all tripping hazards have been removed.

These items will also be checked during an unannounced visit to be carried out shortly.

In addition please supply me with:

- The asbestos clearance test results and certificate following the recent asbestos removal works in the cellar

Letter to:

**Mr Edward McGee**  
"The Haven"  
Mire Syke Lane  
Scotton  
KNARESBOROUGH  
HG5 9HW

**Mr Maurice France**  
"Thatched Cottage"  
34 Stepney Drive  
Scarborough  
North Yorkshire  
YO12 5DH

Copies to:

**1 Mr Steve Nolson**  
[Goldcrestleisure@btconnect.com](mailto:Goldcrestleisure@btconnect.com)

**2 The Woolley Public House**

**3 BMBC Licensing Section**

Please contact me as soon as possible if there is any reason why you are unable to comply with these requirements.

I also understand that you, as business partners, are now using the trading style *Goldcrest Leisure* but that the limited company of that name does not operate The Woolley. Please let me know if this situation has changed.

I look forward to receiving the information requested by return of post or by Fax.

Yours sincerely,

A handwritten signature in black ink, appearing to read 'Stephen Butler', written in a cursive style.

Stephen Butler  
Senior Environmental Health Officer



# CERTIFICATE OF COMPLIANCE

## P.A.T TEST

This certificate is awarded to

**The Whooley, Wooley Colliery Road, Dalton, Barnsley**

This certificate is issued for appliances 001-005 excluding failed items: 0

**ISSUED BY : 1ST CHOICE TRADES LTD**  
**TEL. 01274 729563**

17/6/09

Signature

Date

17/6/09

Signature

Date



# LIST OF APPLIANCES BY IDENTITY

Site: **THE WOOLEY**

Reference: **E/M/GOLD**

Date of Inspection: **17/6/09**

Appliance Identity	001	Description	FRIDGE	Electrical Appliance
Serial Number	773702102	Manufacturer	ZENITH	
Location	BAR	Model	CORNELIUS 600WIDE	
Date Last Tested	?		Next Test Date	17/6/10
Date Last Inspection	?		Next Inspection Date	17/6/10

**CHECKED PASSED**

Appliance Identity	002	Description	FRIDGE	Electrical Appliance
Serial Number	99311093	Manufacturer	QUEST	
Location	BAR	Model	QM3	
Date Last Tested	?		Next Test Date	17/6/10
Date Last Inspection	?		Next Inspection Date	17/6/10

**CHECKED PASSED**

Appliance Identity	003	Description	FRIDGE	Electrical Appliance
Serial Number	B	Manufacturer	OSBOURNE REFRIGERATION	
Location	Bar	Model		
Date Last Tested	?		Next Test Date	17/6/10
Date Last Inspection	?		Next Inspection Date	17/6/10

**CHECKED PASSED**

Appliance Identity	004	Description	FRIDGE	Electrical Appliance
Serial Number	917041	Manufacturer	OSBOURNE REFRIGERATION	
Location	BAR	Model		
Date Last Tested	?		Next Test Date	17/6/10
Date Last Inspection	?		Next Inspection Date	17/6/10

**CHECKED PASSED**

Appliance Identity	005	Description	FRIDGE	Electrical Appliance
Serial Number	0000003295	Manufacturer	BARLINS	
Location	BAR	Model	3S/F	
Date Last Tested	?		Next Test Date	17/6/10
Date Last Inspection	?		Next Inspection Date	17/6/10

**CHECKED PASSED**

Appliance Identity		Description	Electrical Appliance	
Serial Number		Manufacturer		
Location		Model		
Date Last Tested			Next Test Date	
Date Last Inspection			Next Inspection Date	

Appliance Identity		Description	Electrical Appliance	
Serial Number		Manufacturer		
Location		Model		
Date Last Tested			Next Test Date	
Date Last Inspection			Next Inspection Date	

